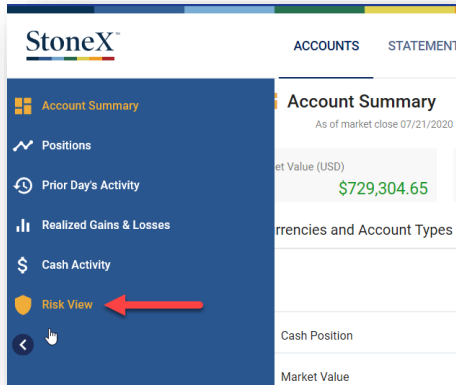




## How to Access Risk View

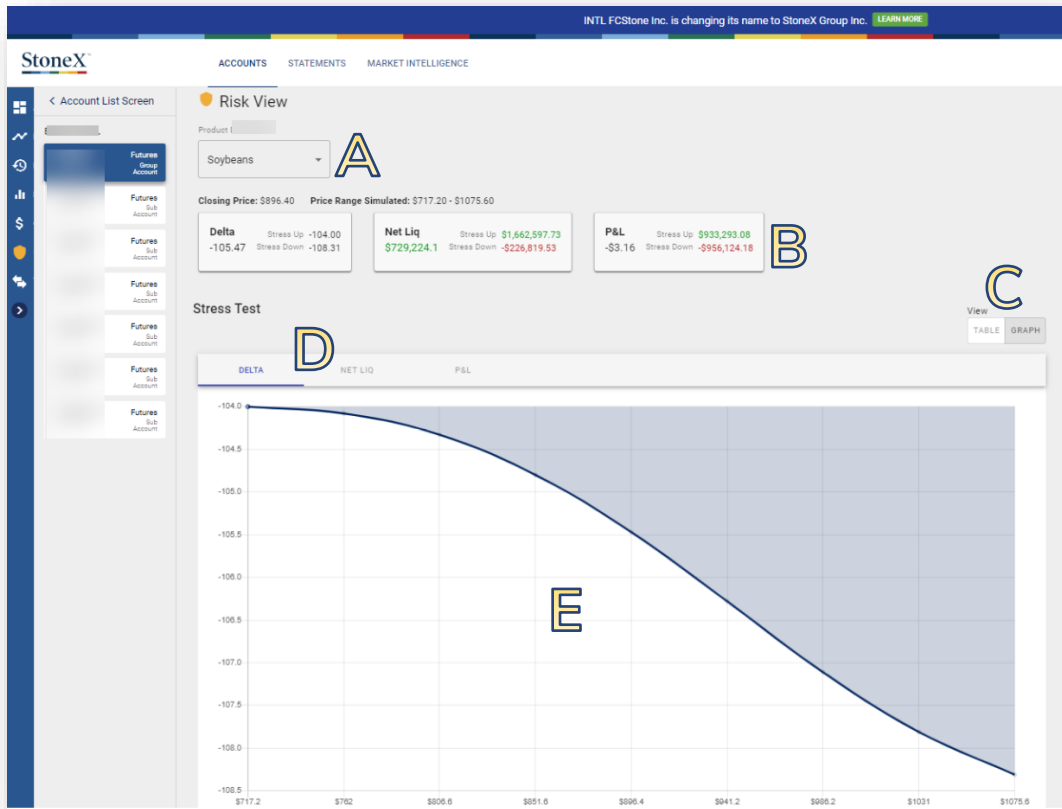
To Access Risk View:

1. Navigate to <https://my.intlfcstone.com>
2. Locate the account (and/or subaccount) you want to view
3. Click the Risk View icon (shown below)



## Overview of Main Screen

Use the Image below and table on the next page to see a description of each new feature.





### Overview of Risk View Screen, continued

Item	Description
A	Product Selector
B	Numerical representation of stress test results
C	Slide toggle to select a table vs. graph display
D	Tab indicators for Delta, Net Liq, or P&L data
E	Graph image
F	Table image (shown below)

StoneX ACCOUNTS STATEMENTS MARKET INTELLIGENCE

INTL FCStone Inc. is changing its name to StoneX Group Inc. [LEARN MORE](#)

Account List Screen < Risk View

Product: Soybeans

Closing Price: \$896.40 Price Range Simulated: \$717.20 - \$1075.60

**Delta** Stress Up: -104.00 Stress Down: -108.31  
**Net Liq** Stress Up: \$1,662,597.73 Stress Down: -\$226,819.53  
**P&L** Stress Up: \$933,293.08 Stress Down: -\$956,124.18

Stress Test View: TABLE GRAPH

	Price	Delta	Net Liq	P&L
+19.99%	\$1,075.60	-108.31	-\$226,819.53	-\$956,124.18
+15.02%	\$1,031.00	-107.81	\$13,888.02	-\$715,416.63
+10.02%	\$986.20	-107.11	\$254,366.93	-\$474,937.72
+5.00%	\$941.20	-106.28	\$492,252.71	-\$237,051.94
0.00%	\$896.40	-105.47	\$729,301.49	-\$3.16
-5.00%	\$851.60	-104.80	\$964,675.44	\$235,370.79
-10.02%	\$806.60	-104.33	\$1,197,763.80	\$468,459.15
-14.99%	\$762.00	-104.08	\$1,430,883.03	\$701,578.38
-19.99%	\$717.20	-104.00	\$1,662,597.73	\$933,293.08