

# Benefits

## EXECUTE WITH GREATER PRECISION

Time your entries & exits with much greater precision

Tracks volume with price to produce a multi-dimensional display

## FILTERS THE NOISE

See **INSIDE** the price bar for clues to whether price is strengthening or weakening

## TRACK ORDER FLOW

Combining price with total volume and bid / ask volume creates unprecedented accuracy for short term price rotations

## GAIN CONFIDENCE

Follow and better understand order flow to the bid and ask

Each Footprint combines price and volume to act as a thermometer of price strength and then alerting through color

## COMPLIMENTS EXISTING METHODOLOGIES

Used to confirm other indicators and strategies by gauging supply/demand at key levels & points.

Compliments Market Profile® by providing more precise timing of a trade

# open e cry™ Footprint® Chart

See **INSIDE** the Chart®

**EXECUTE WITH GREATER PRECISION** - Because the Footprint® chart collects both volume and price and then displays them in one data point, your eyes only needs to focus in one place. You will see intra bar reversals and uncover information and patterns you never thought was possible.

Tracks volume with price to produce a multi-dimensional display for quicker identification of changes in the market.

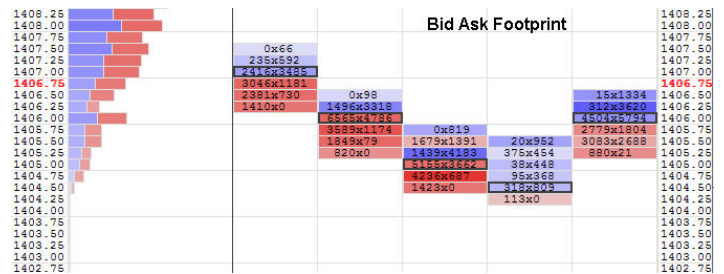
**FILTERS THE NOISE** See **INSIDE** the price bar for clues to whether price is strengthening or weakening – as price trades, not after the fact.

When the markets are noisy, the Footprint® provides clues to confirm this type market activity by highlighting the lack directional volume and order flow.

Noisy markets produce very specific volume patterns, whereas, directional markets produce very different volume patterns.

**COMPLIMENTS EXISTING METHODOLOGIES** - Used to confirm other indicators and strategies by gauging supply and demand. Compliments Market Profile® very well by providing necessary volume information at key areas, thus allowing for much better timing of your trades.

**SPOT PIVOT POINTS WITH GREATER ACCURACY** - The primary characteristic of the Footprint® is to provide greater detail of underlying market dynamics.



**TRACK VOLUME INTRA-BAR** - As a bar builds, the Footprint® chart will provide an inside view of the market so that you can position and react prior to other market participants. This will allow for more timely entries and exits because you are looking inside the bar instead of waiting for it to close and then gauging market sentiment.

Combining tick count charts with total volume and bid / ask volume creates unprecedented accuracy for short term price rotations, allowing for more precision while trading.

**GAIN CONFIDENCE** - Follow and better understand order flow because you can see and quantify actual transacted volume.

Each Footprint combines price and volume to act as a thermometer of price strength and then alerting through color. This allows for greater sensitivity to price movement which leads to understanding.

Subscribe via Trader Toolbox Menu

To Launch right click symbol | choose Footprint Chart